

7 - Agriculture

Public Interest

Survey results from 2014 & 2016 show a clear desire to keep and grow farming in southern Kenton County

"It is important to keep agriculture a viable part of South Kenton economy."
(Total Agree = 92.2%)

"It is important to maintain the rural character of South Kenton County."
(Total Agree = 90.3%)

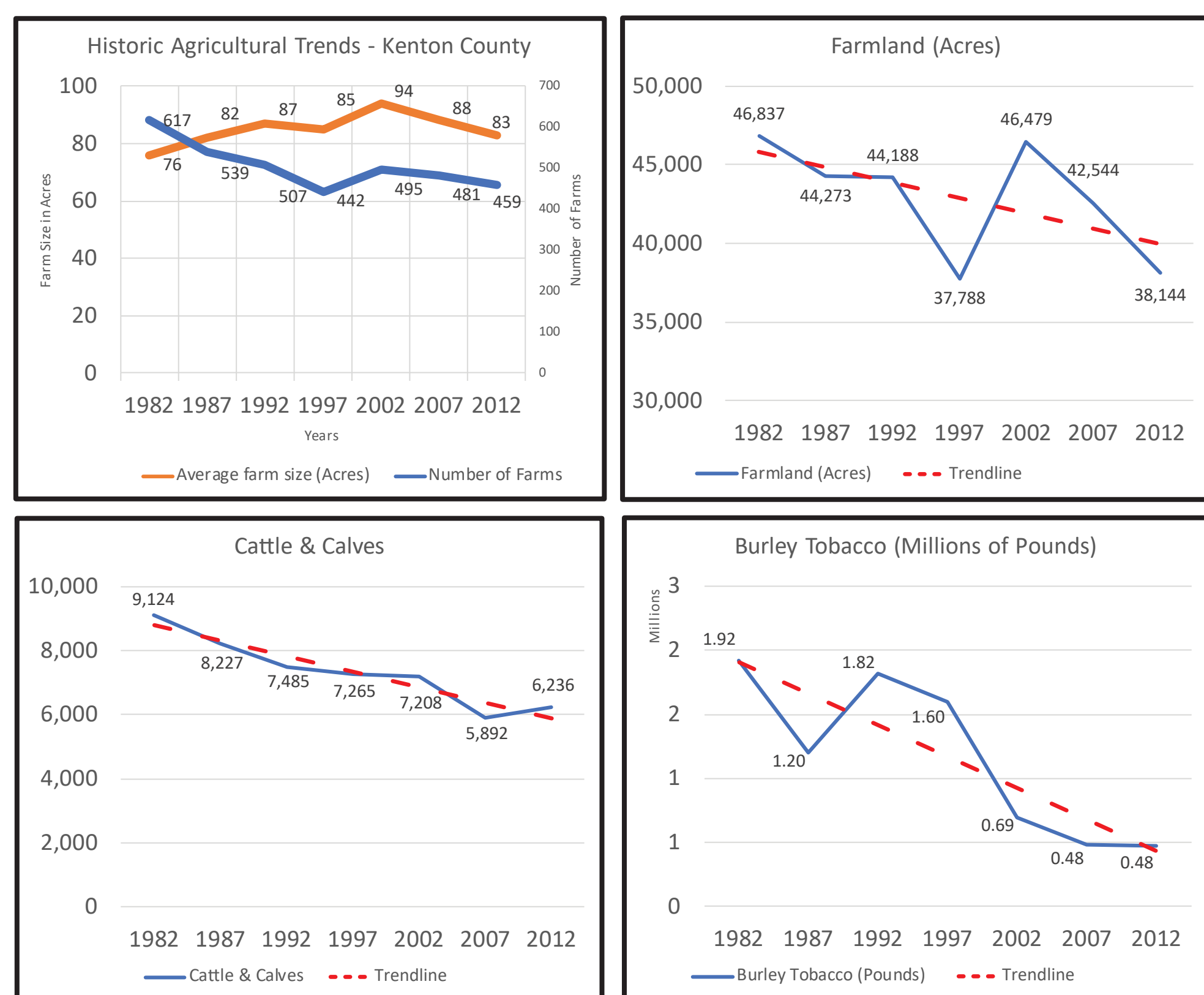
"Subdivisions and other residential should be directed away from land which is being used for agriculture."
(Total Agree = 80.0%)

"Protect natural terrain in South Kenton to maintain our rural landscape and support agritourism."
(Total Agree = 91.9%)

"There is a need to proactively plan for parks and conserved open space in South Kenton."
(Total Agree = 76.6%)

Source: South Kenton citizen surveys 2014 & 2016

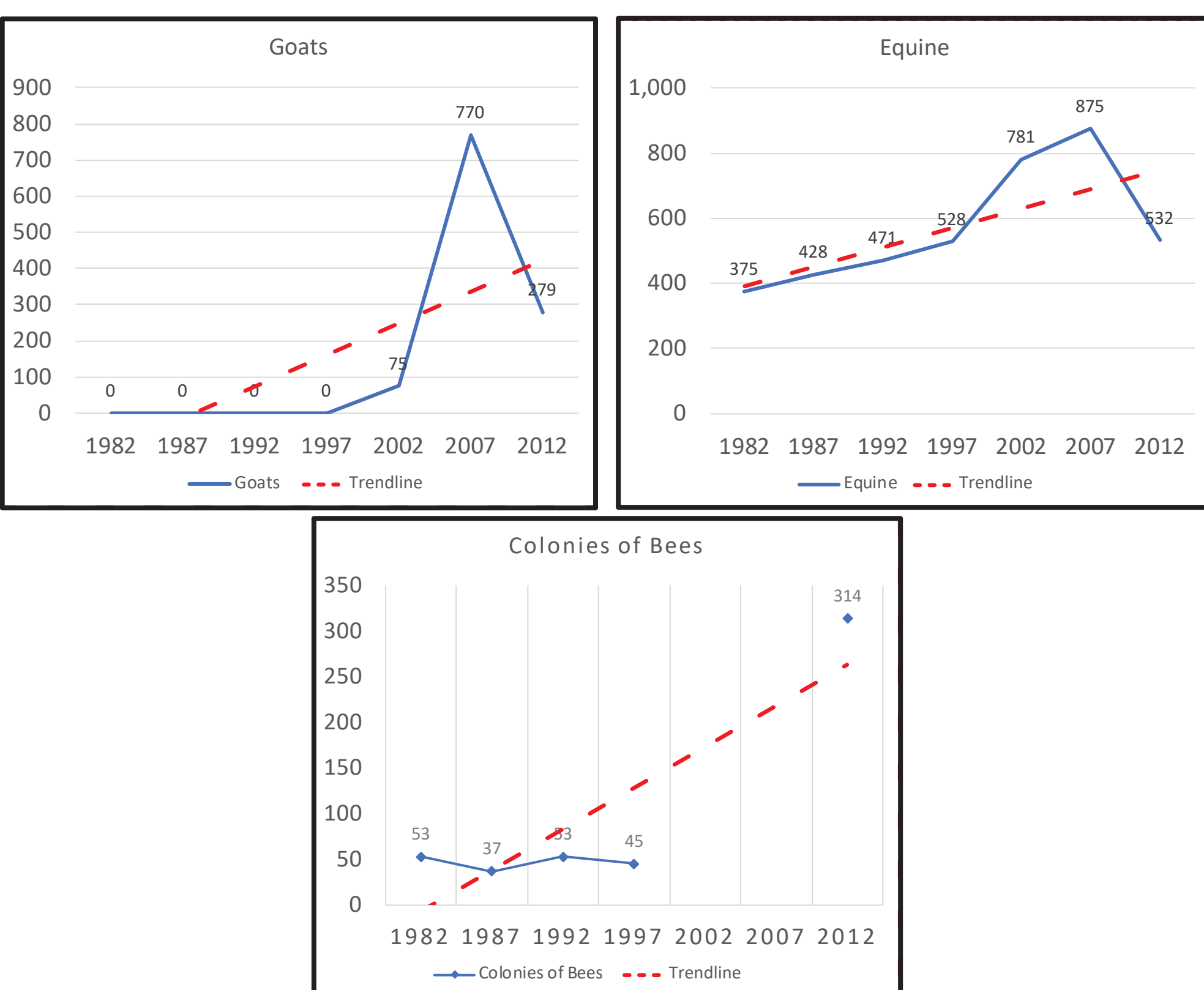
Decline of Traditional Ag



The charts above show general decreases in farm size, number of farms, countywide farmland, cattle, and tobacco production in Kenton County.

Source: USDA Census of Agriculture 1982-2012

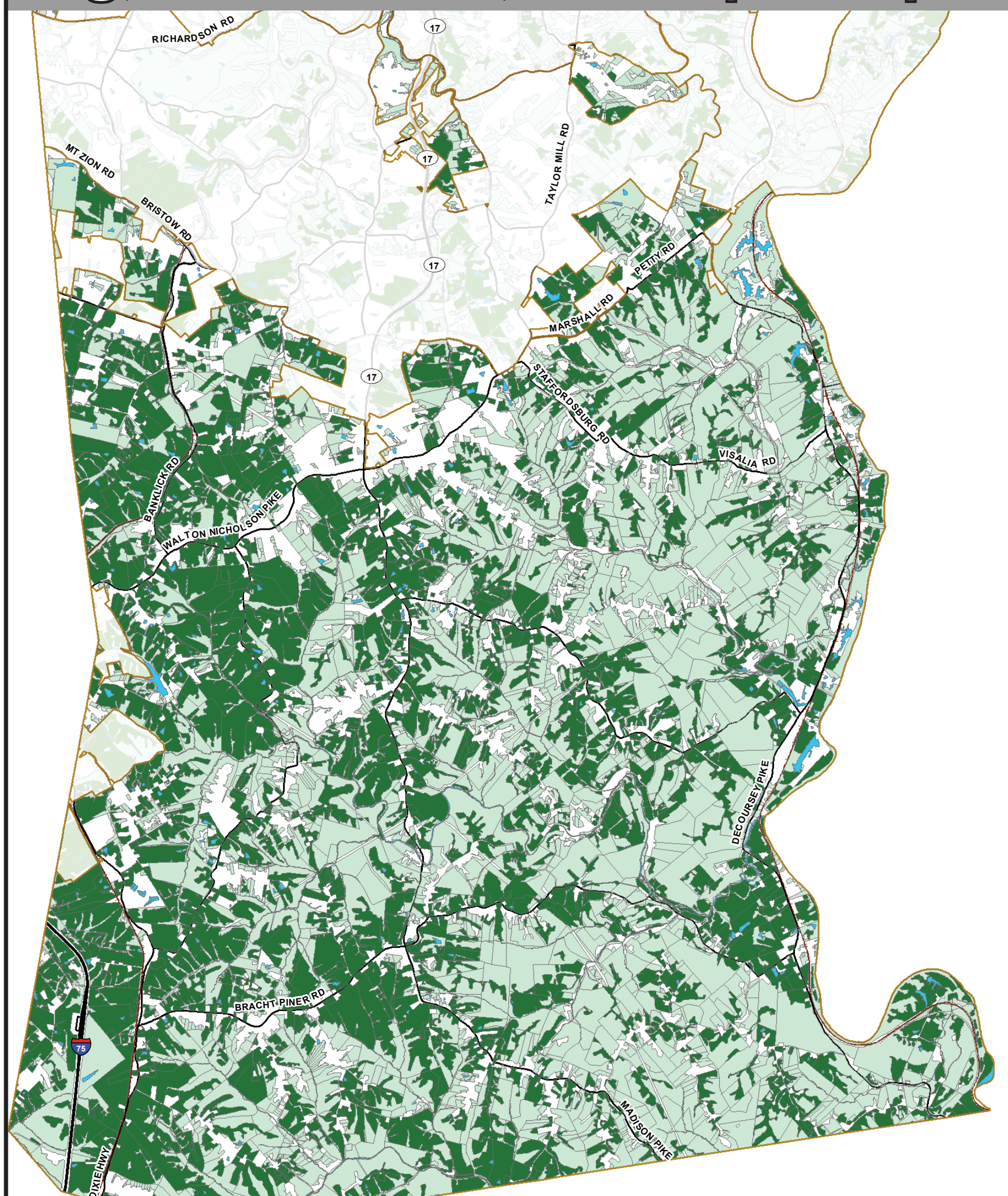
Growth in New Farming



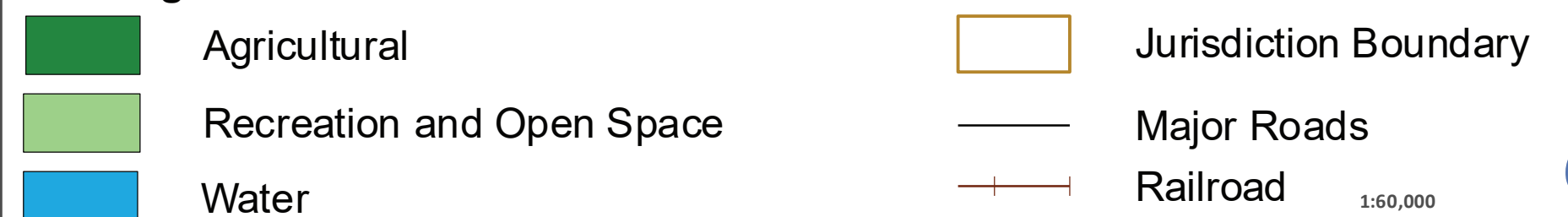
This set of charts shows general increases in newer farming operations like goats, equine, and bee production in Kenton County.

Source: USDA Census of Agriculture 1982-2012

Ag, Recreation, and Open Space



Existing Land Use



Okay, so what does all this farming information really mean and why should I care?

- Trends show traditional farming in decline while new ventures are growing.
- Farming is likely to continue in the area until demand for other uses goes up.
- New types of farming ventures may take the place of traditional crop and cattle farms.