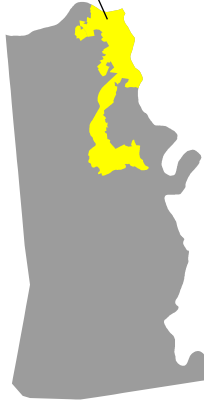


# COVINGTON

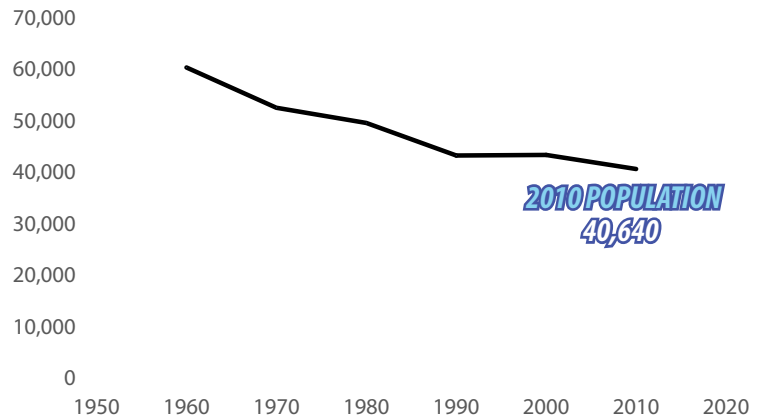
## HOUSEHOLD SIZE 2000-2010

8,695 Acres

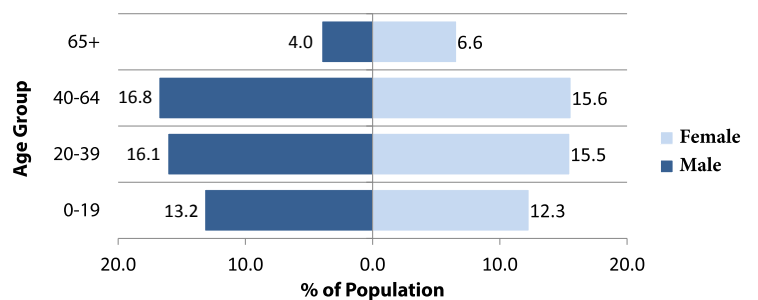


City	2000	2010
Edgewood	3.03	2.66
Independence	2.89	2.95
Villa Hills	2.78	2.56
Kenton Vale	2.74	2.44
Ryland Heights	2.73	2.84
Elsmere	2.71	2.78
Taylor Mill	2.71	2.52
Walton	2.67	2.81
Fairview	2.60	2.38
Ludlow	2.54	2.41
Erlanger	2.50	2.52
Bromley	2.45	2.41
Crescent Springs	2.40	2.45
Fort Wright	2.34	2.26
<b>Covington</b>	<b>2.31</b>	<b>2.30</b>
Lakeside Park	2.30	2.26
Fort Mitchell	2.29	2.34
Crestview Hills	2.26	2.07
Park Hills	2.08	2.19
Unincorporated	NA	NA
<b>Kenton County Average</b>	<b>2.56</b>	<b>2.36</b>

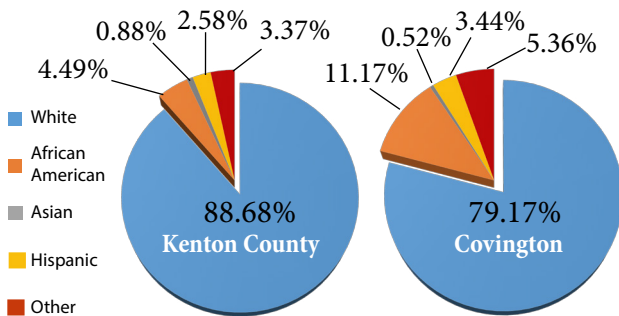
## POPULATION



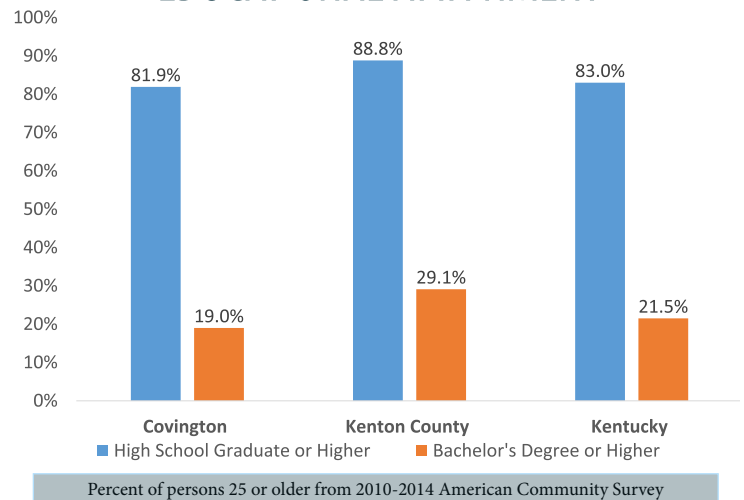
## AGE AND GENDER



## POPULATION BY RACE



## EDUCATIONAL ATTAINMENT



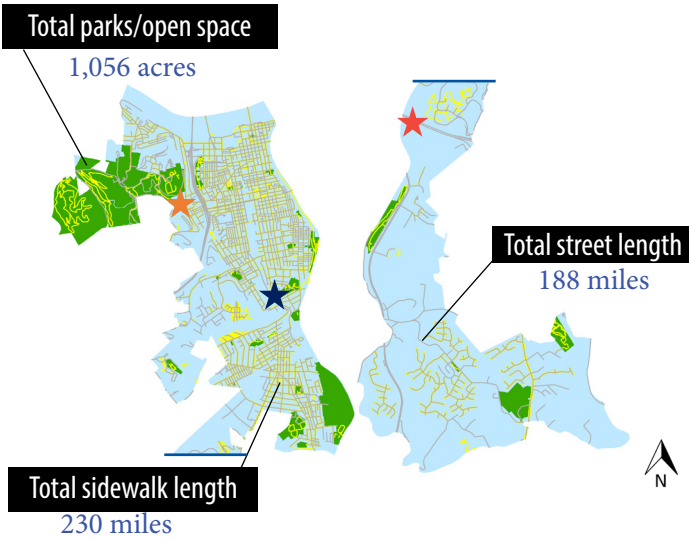
## HOUSING

	2000	2010
<b>Total Housing Units</b>	20,450	20,647
Single Family	11,643	12,504
Multi-Family	8,807	8,170
<b>Vacant Housing Units</b>	2,191	3,020
<b>Owner Occupied Housing Units</b>	9,004	8,443
Median Value	\$71,900	\$110,200
<b>Renter Occupied Units</b>	9,253	8,590
Median Gross Rent	\$451	\$640
<b>Median Household Income</b>	\$30,735	\$37,675
<b>Average Household Size</b>	2.31	2.30

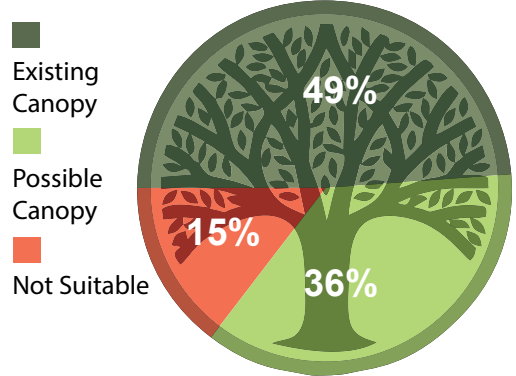
## SOURCES

US Census Bureau | Kentucky State Data Center | [www.covingtonky.gov](http://www.covingtonky.gov)  
LINK-GIS | KYTC Traffic Count Reporting System

# COVINGTON

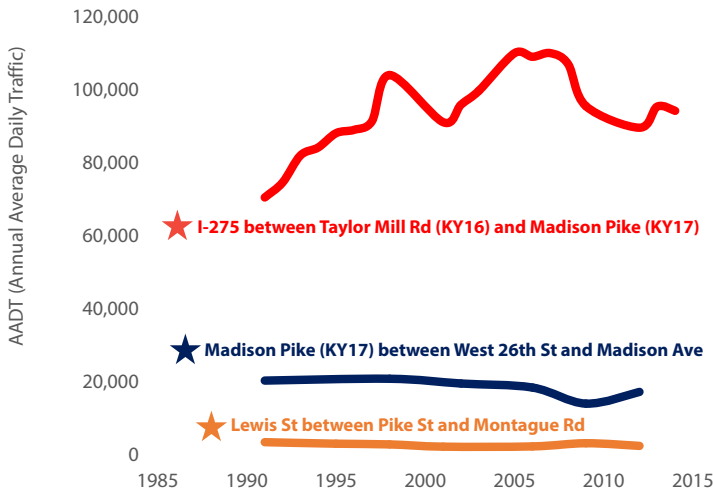


## TREE CANOPY

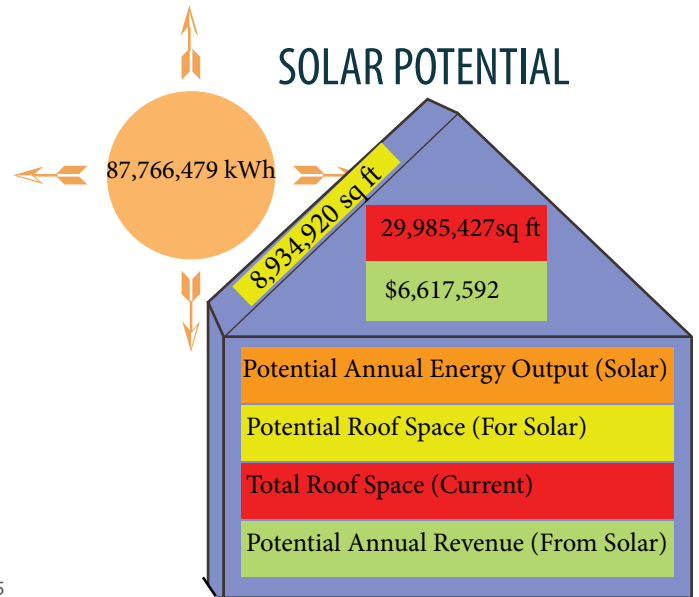


4,161 Acres of existing tree canopy

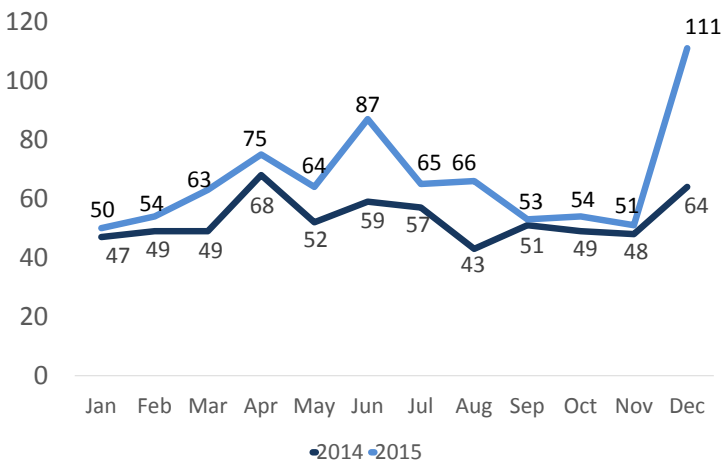
## KEY TRAFFIC COUNTS



## SOLAR POTENTIAL



## PERMITS REQUESTED



Data include building, zoning, electrical and HVAC permits

## ZONING 2015

