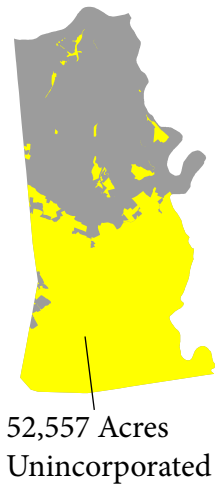


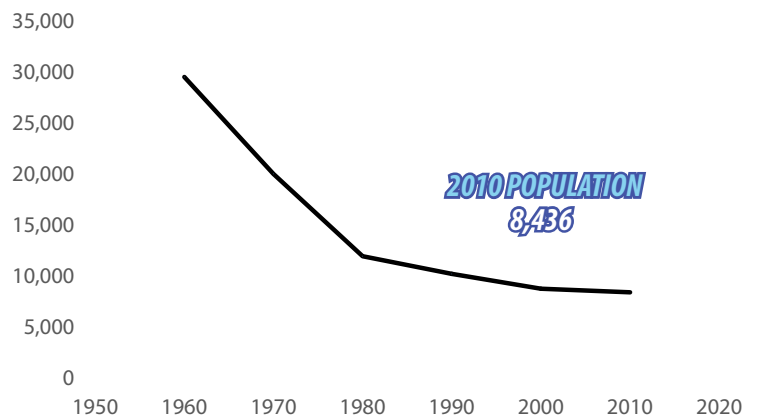
# UNINCORPORATED KENTON COUNTY

## HOUSEHOLD SIZE 2000-2010

City	2000	2010
Edgewood	3.03	2.66
Independence	2.89	2.95
Villa Hills	2.78	2.56
Kenton Vale	2.74	2.44
Ryland Heights	2.73	2.84
Elsmere	2.71	2.78
Taylor Mill	2.71	2.52
Walton	2.67	2.81
Fairview	2.60	2.38
Ludlow	2.54	2.41
Erlanger	2.50	2.52
Bromley	2.45	2.41
Crescent Springs	2.40	2.45
Fort Wright	2.34	2.26
Covington	2.31	2.30
Lakeside Park	2.30	2.26
Fort Mitchell	2.29	2.34
Crestview Hills	2.26	2.07
Park Hills	2.08	2.19
<b>Unincorporated</b>	<b>NA</b>	<b>NA</b>
<b>Kenton County Average</b>	<b>2.56</b>	<b>2.36</b>

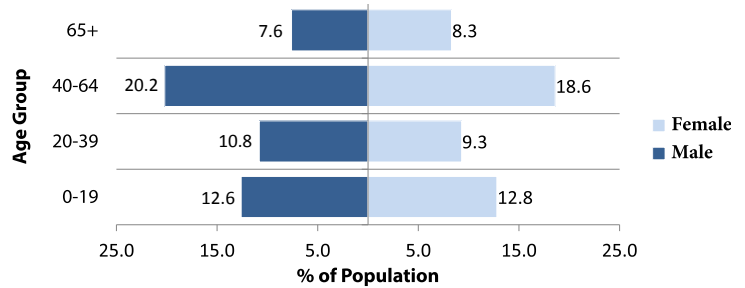


## POPULATION

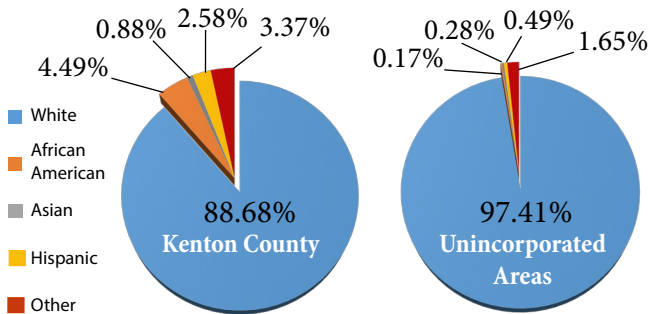


Demographic data for unincorporated areas are not tracked by the US Census Bureau. Demographics for unincorporated areas were calculated by subtracting totals in all Kenton County cities from Kenton County totals. Data are made available as a calculation and are not an official record of the census.

## AGE AND GENDER



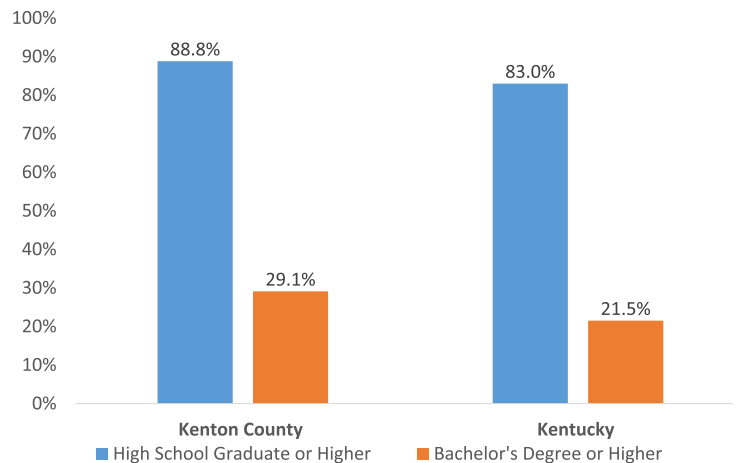
## POPULATION BY RACE



## HOUSING

	2000	2010
<b>Total Housing Units</b>	3,247	3,523
Single Family	3,205	3,489
Multi-Family	42	34
<b>Vacant Housing Units</b>	181	197
<b>Owner Occupied Housing Units</b>	2,676	2,437
Median Value	NA	NA
<b>Renter Occupied Units</b>	459	379
Median Gross Rent	NA	NA
<b>Median Household Income</b>	NA	NA

## EDUCATIONAL ATTAINMENT

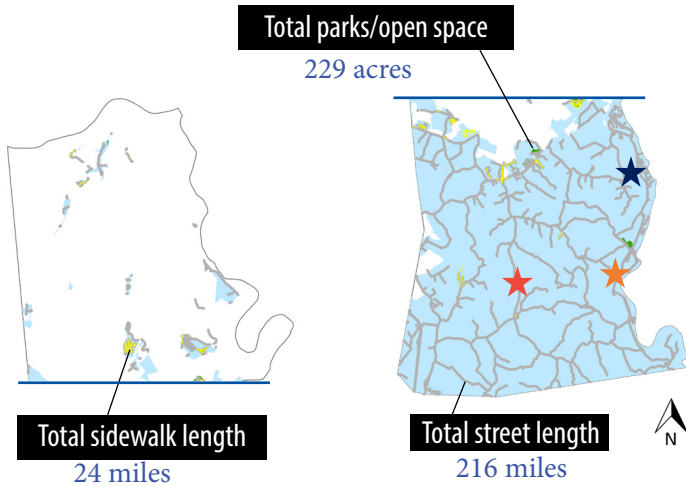


Percent of persons 25 or older from 2010-2014 American Community Survey  
The above chart does not include demographics for unincorporated areas because data could not be calculated from census records.

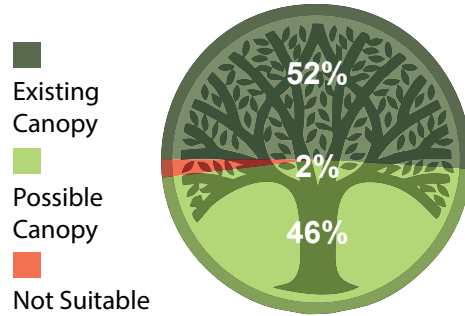
### SOURCES

US Census Bureau | Kentucky State Data Center | Kenton County Fiscal Court  
LINK-GIS | KYTC Traffic Count Reporting System

# UNINCORPORATED KENTON COUNTY

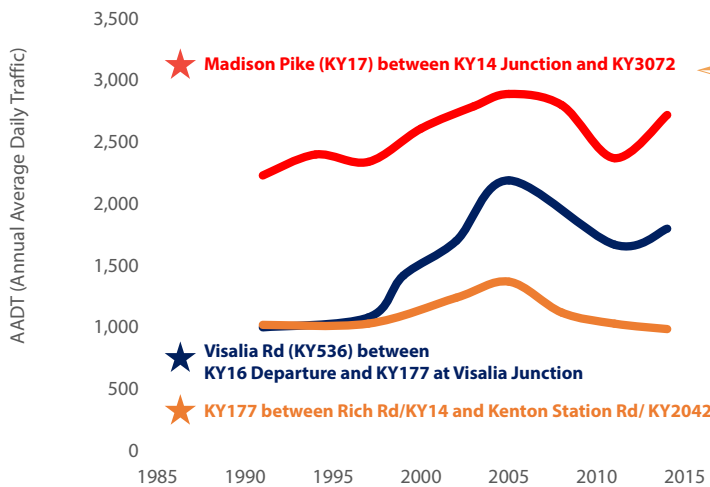


## TREE CANOPY

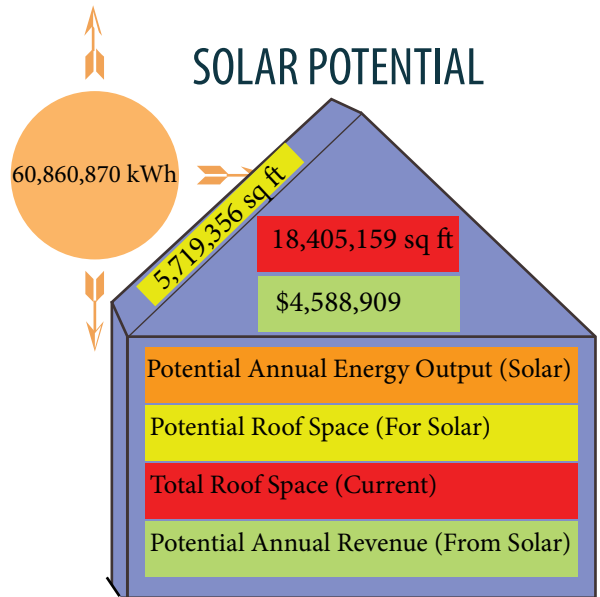


28,190 Acres of existing tree canopy

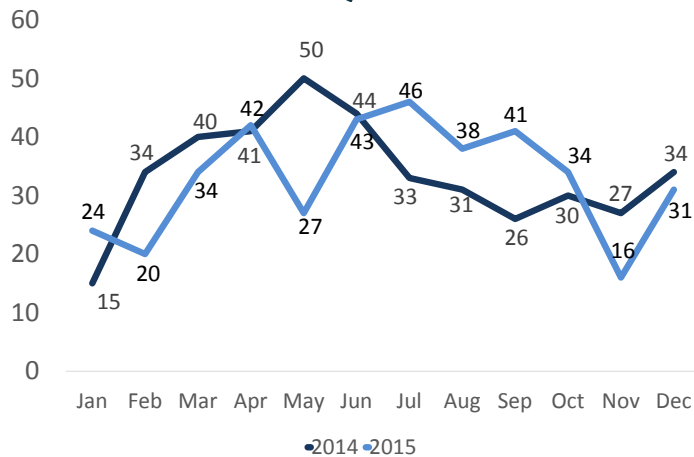
## KEY TRAFFIC COUNTS



## SOLAR POTENTIAL



## PERMITS REQUESTED



Data include building, zoning, electrical and HVAC permits

## ZONING 2015

